

# LiquiFold 315 Intermediate Bulk Container



Intermediate Bulk Containers:

Simplifies Handling

Minimizes Packaging Material

Reduced Packaging Cost

Improved Safety

Improved Hygiene

Improved Ergonomics



Tote Solutions Ltd.

**778-808-4987**

[www.totesolutions.com](http://www.totesolutions.com)

# LiquiFold 315 – Intermediate Bulk Container

LiquiFold 315 is a Bag in Box Intermediate Bulk Container which folds flat for space efficiency and is specifically designed to produce savings, improve handling and address environmental issues, for all non-hazardous liquids.

During LiquiFold's design process, every aspect of the handling chain has been analyzed to determine user friendly and efficient solutions for filling, decanting, storage, transport and cleaning. The result is a versatile new handling system for liquid products, which offers significant benefits over existing systems and provides a contemporary solution that embraces the future.



LiquiFold 315 takes up very little space when folded, thus optimizing return transport and storage capacity.



One person can easily prepare the container for filling.



The flexible liner is easy to install.



## Hygiene

The highest standards of hygiene are a fundamental requirement when handling food and chemicals. LiquiFold 315 is made of materials approved for use with food, has a hygienic design and is easy to keep clean. The flexible liner can be sterile and can be filled without letting air into the container.

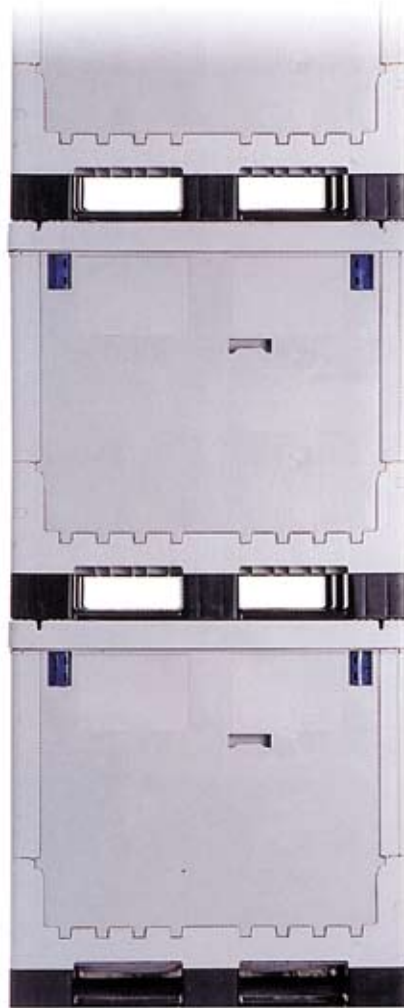
## Safety

LiquiFold 315 is designed for extremely tough handling. All products are tested for transport by truck, rail, sea container and break bulk ships. Particular consideration has been paid to railway carriage shunting, which can entail extremely hard impacts, stresses and strains.

# The new packaging solution for liquid products



The filling process can easily be done using existing systems.



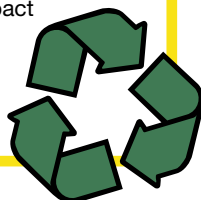
LiquiFold 315 can be stacked up to five high when filled—even for long-term outdoor storage.



After Emptying, LiquiFold 315 is easily folded together for return transport.

## Environment

A reusable system eliminates the need for large quantities of disposable packaging material. A foldable reusable system saves on return transport compared to a rigid system. Life Cycle Analysis conducted at the University of Lund in southern Sweden show that LiquiFold 315 dramatically reduces environmental impact compared to the most common systems for liquids handling.



## Profitability

The aim of LiquiFold 315 is to combine the benefits of a rigid return container system, with the simplicity of disposable products. The fact that the containers fold together reduces return transport costs and storage space, and flexible liners make cleaning extremely simple and increase product safety, as well as reducing scrap. Compared to a disposable system, LiquiFold 315 offers quick payback on investment due to a significant decrease in material consumption.



# A revolutionary packaging solution for fluid handling

Side walls and base have rounded corners and smooth surfaces, with no cavities where dirt can gather, ensuring the highest level of hygiene and security.



LiquiFold 315 containers are designed for use with a recyclable liner.

Twin-wall side walls engineered for optimum strength.

Integrated 4-way pallet allows efficient and secure handling by forklifts and hand trucks.



LiquiFold 315 containers can be easily and quickly folded when empty for space-saving storage and cost effective distribution.



Ergonomic handgrips make it easy to grasp a side wall and quickly erect a folded container.



LiquiFold 315 containers are equipped with a unique corner locking system that ensures optimum performance even under stress such as high pressure filling and rail transport.



LiquiFold 315 lid has integrated handles on the long sides to facilitate the placement and removal of the cover.



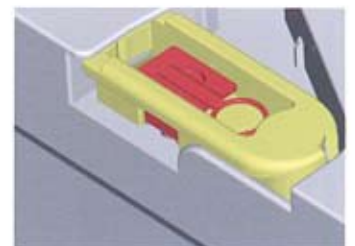
To protect container contents, the LiquiFold 315 lid comes with a unique locking system that secures the cover at eight different places.



Stacking ridges ensure the cover and skid interlock when stacked, allowing a safe, self-supporting column in storage and distribution.



Large labeling area around the top perimeter of the container, including corners, are available for identification of contents. There are also other kinds of labeling such as molded in logos that clearly identify ownership.



Tamper evident seals are available for maximum security of container contents.

# Flexibility in focus

LiquiFold 315 has been developed for use in a wide range of industries and situations. It is designed for different types of liquids which are filled under varying conditions, and with varying demands on shelf-life. LiquiFold 315 can be stored outdoors for long periods, as well as indoors in freezer rooms, for example. LiquiFold 315 is a highly flexible and efficient system.

## Flexible liner protects the contents

LiquiFold 315 is used with a food-grade or aseptic liner which can be filled without allowing air to mix with the product. The contents are protected against external damage and oxidation. When required an aseptic filling system can be used, which together with a gas-tight liner guarantees long storage time.

When the product is to be used, it can be emptied without letting air into the container. The flexible liner collapses on emptying, and no oxidation takes place during the decanting process. This is particularly important when dealing with products that are readily affected by contact with air.

A flexible liner is easy to empty completely, thus avoiding product residue. After emptying the liner is replaced and sent for material recycling, reducing environmental impact.

## Simple handling—for everyone

LiquiFold 315 is equally easy to handle for the company filling and delivering, as for the one receiving and emptying. The most important locking devices on the containers have a simple design, and operation is extremely easy. A lot of effort has been devoted to making all the details as lightweight and ergonomic as possible, making it easy and efficient for anyone to use the system.

## Small details—big impact

Feel free to study the details of LiquiFold 315. The smooth surfaces and rounded corners ensure the highest standards of hygiene, secure protection of the contents and a safer working environment at every stage. All parting lines are overlapping, and it is impossible to access and damage the contents. Even dust and moisture are shut out of a filled LiquiFold 315. Should an accident occur and a LiquiFold 315 component becomes damaged, the modular construction ensures they are easy to replace.

**Contact your local specialist for more information!**

# Commercially efficient

LiquiFold 315 is available for purchase, lease or daily hire/rent; providing flexible, efficient solutions for all commercial requirements.

The facility to rent/hire containers from one National location and dehire in another, can provide major economic benefits by removing the need for return shipments.

LiquiFold 315 is a proven system and with a comprehensive package of ancillary equipment to ensure product handling efficiency across a broad spectrum, in addition to full user support; provides the modern solution for the old challenge of liquids handling.

## Accessories and customized solutions'

LiquiFold 315 is available for various applications, all of which place different demands on the system's accessories. New innovations are continuously being developed for different areas of use, to broaden the scope of applications and enhance efficiency.

## Future demands, today

Our know-how is based on over 25 years' experience in materials handling. Care for the environment has always been our guiding principle, which has resulted in solutions based on return systems and recycling. Financial gains often go hand in glove with environmentally friendly logistical solutions, and this connection will prove even stronger in the future.

For those with HACCP or process control requirements, LiquiFold 315 is the ideal solution.



All LiquiFold 315's are tested according to international test standards. This includes vibration and impact tests.

# Ancillary Equipment – Options



## LINER GLAND CLIPS

Used to position the decant gland and lock the liner in place before filling.



## GRASPING TOOL

Used to position and fit the liner into the container.



## DISCHARGE OF LINER BAG

To decant the unit, a valve with either a pin or crown cutter is used to cut the sealed membrane.



## EXTERNAL VALVE

Various valves are available and are made from FDA approved materials.

## WHITE VALVE AND CUTTING PIN



## 2" DRUM MAJOR TAP



## 2" STRAIGHT THROUGH TAP



## 2" CUTTER ADAPTER



## LINER BAG

A wide range of liner bags are available which are produced from multiple layers and seam welded. They also carry FDA, HACCP and Kosher approval.



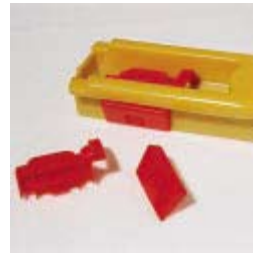
## CONNECTORS

Various connectors are available. The connectors are attached to a filling or discharge hose with the hose either connected to the filling or decant gland.



## FILLING BRIDGE

The filling gland on the liner bag is connected to a filling bridge for easy filling.



## TAMPER EVIDENT SEAL

The tamper evident seal is used to secure the eight locking handles on the lid and forms part of the HACCP compliance.



## TAMPER EVIDENT CAP

The tamper evident cap protects the discharge area during transportation / storage and is part of the HACCP compliance.



## ASEPTIC MEMBRANE PUSHER CUTTER



## DECANT LANCE

Used to decant high viscosity products.



## ELBOW SPOUT

Numerous other accessories are also available.



## HEATER MAT

Thermostatically controlled heater mat. Positioned under the liner prior to filling and used to assist flow with high viscosity products.

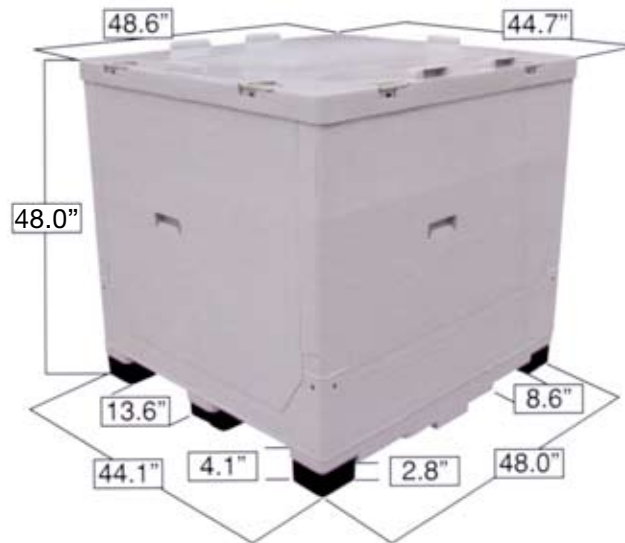


## BALL VALVE ASSEMBLY

Option for decanting.

# Technical Datasheet

<b>ITEM NO.</b>			
LiquiFold 315		xxxx.xxx.xxx	
LiquiFold 315BD		xxxx.xxx.xxx	
<b>STANDARD COLOUR</b>		Ivory/Cream	
<b>DIMENSIONS</b>		<b>IN (MM)</b>	
<b>OUTSIDE DIMENSIONS INCL LID</b>			
Length	48.6	(1235)	
Width	44.7	(1135)	
Height	48.0	(1217)	
Collapsed Height	18.9	(480)	
<b>OUTSIDE DIMENSIONS EXCL LID</b>			
Length	48.0	(1220)	
Width	44.1	(1120)	
Height	46.7	(1185)	
<b>INSIDE DIMENSIONS</b>			
Length	44.9	(1140)	
Width	40.9	(1040)	
Depth	40.9	(1038)	
<b>HEIGHT STACKED</b>			
		<b>IN (MM)</b>	
2 High	94.6	(2404)	
3 High	141.4	(3591)	
4 High	188.1	(4778)	
5 High	234.8	(5965)	
<b>HEIGHT FOLDED</b>			
2 High	36.6	(930)	
3 High	54.3	(1380)	
4 High	72.0	(1830)	
5 High	89.8	(2280)	
6 High	107.5	(2730)	
<b>FORK OPENINGS LONG SIDE</b>			<b>IN (MM)</b>
Height	2.8	(70)	
Width	8.6	(219)	
<b>FORK OPENINGS LONG SIDE</b>			
Height	4.1	(105)	
Width	13.6	(345)	
<b>PROJECTED FOOT AREA</b>	15.1	ft <sup>2</sup> (1.4 m <sup>2</sup> )	
<b>CONTAINER CAPACITY</b>	3307	lbs (1500 kg)	
<b>TARE WEIGHT</b>	225.0	lbs (102 kg)	
<b>MAX LOAD STACK (Dynamic)</b>	7064	lbs (3204 kg)	
<b>MAX LOAD STACK (Static)</b>	17660	lbs (8010 kg)	
<b>VOLUME - INTERNAL FILL VOLUME</b>	315	gal (1192 l)	
<b>APPROXIMATE RETURN RATIO</b>	2.5:1		
<b>FUNCTIONAL TEMPERATURE</b>			
Storage, handling and shipping	-4 °F to +104 °F		
	(-20 °C to +40 °C)		
Hot fill applications	190 °F (87 °C)		
<b>TRANSPORTATION (folded)</b>			
53 ft trailer	168	units	
2x7 M trailer	120	units	
12.5 M trailer	110	units	
<b>SEA CONTAINER (folded)</b>			
20 ft	50	units	
40 ft	94	units	
<b>MATERIAL</b>			
Polypropylene, Food contact approved, Fully recyclable			



**Tote Solutions Ltd.**

P.O. Box 10226 Clayburn Plaza  
 Abbotsford, BC V2S 8K5  
 T: 778.808.4987 • F: 604.853.5816  
 info@totesolutions.com

**778-808-4987**