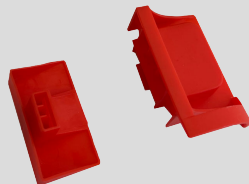




Tote Solutions Ltd.

# Ancillary Equipment





Tote Solutions Ltd.

# Ancillary Equipment

Tote Solutions offers a comprehensive inventory of **ancillary equipment** to ensure product handling efficiency and safety across a broad spectrum of applications. With a wide range of valves, fittings, adapters, heating mats, tamper evident seals, plus more we have what you need for many different filling and discharge applications.



- **FlexiValve V50 with Pusher Cutter Assembly**

is a 2" butterfly valve and pusher cutter to push the crown cutter through the membrane of the liner and allow for efficient decanting. Constructed with food contact approved materials.



- **Tamper Evident Lid Handle Seals**

are used to secure the LiquiFold 315 lid handles in place for HACCP compliance during storage and transportation.



- **Tamper Evident Discharge Cap Seal**

available for the bottom discharge opening of the LiquiFold 315 for HACCP compliance during storage and transport.



- **Heater Mat**

is an effective and very efficient method of introducing heat for high viscosity products.



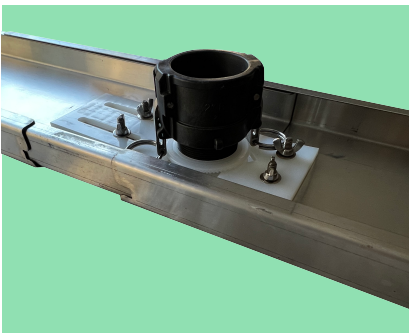
- **Decant Lance**

to assist decant flow of high viscosity products.



- **Sight Strip**

is a fluid level indicator to show internal product levels for containers with solid walls and providing a continuous L.E.D readout for quick reference.



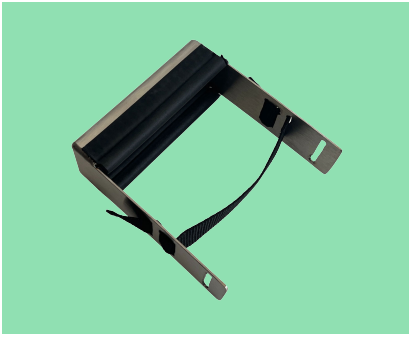
- **Filling Bridge**

to attach the filling gland on the liner bag for easy filling.



- **Gland Adapter**

attached to liner to secure the dispense fitment valve to the container.



- **Grasping Tool**

to facilitate the installation of the liner by attaching to the gland adapter when placing liner in IBC and pulling thru discharge opening to secure gland adapter to container.



- **Adapters / Connectors / Valves**

available in a wide range of options to ensure product handling ease, efficiency and safety for a variety of applications.



- **Winder Assembly**

to aid in dispensing all your product from the liner.



- **Mixers**

with folding propeller for blending or agitating product.



- **Decant Valve Support Cable**

attachment to hold valve in place.



- **Washing Station**

powerful automatic washing unit to clean the LiquiFold 315.



- **Weigh Scales**

accurately measure the weight of your product.



- **Flow Meters**

to control and record batching, volume, mixing and rate of flow for your product.

