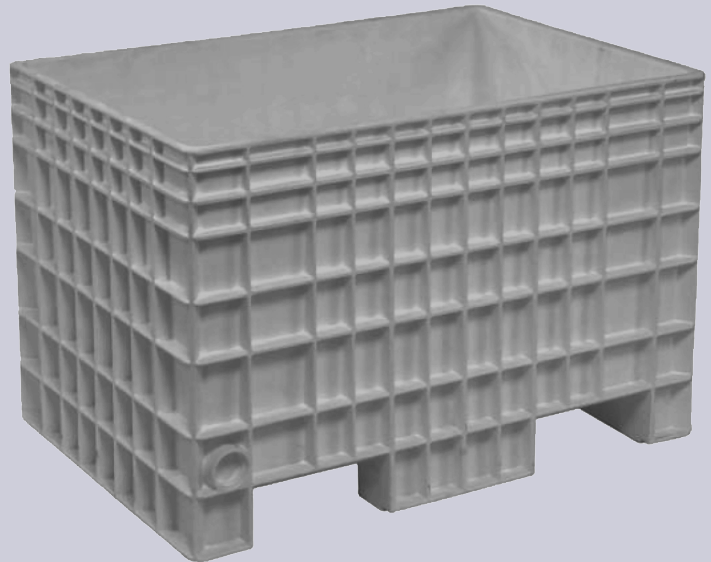
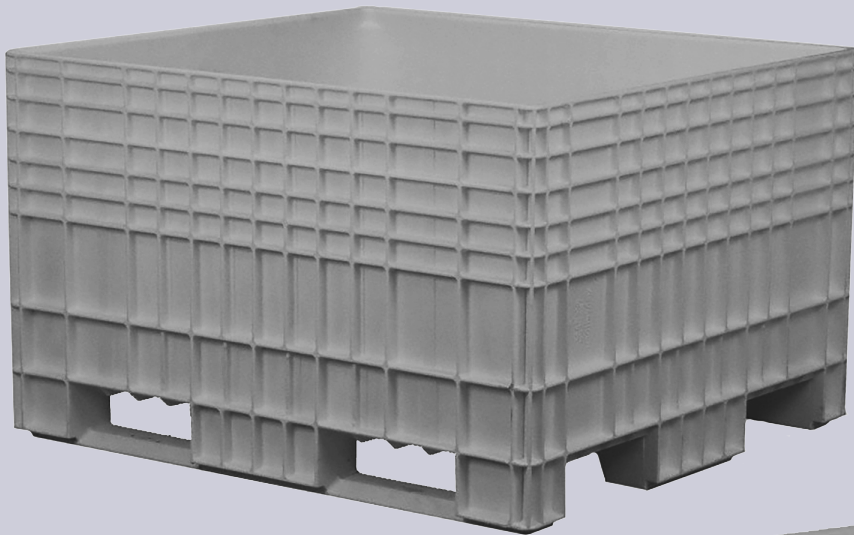




Tote Solutions Ltd.

Big Box Containers



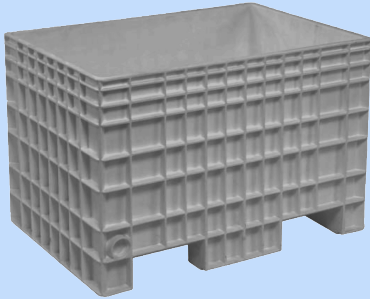
KEY FEATURES OF BIG BOX CONTAINERS

Durable and adaptable, **Big Box Containers** are ideal for a variety of applications including food processing, agriculture, fisheries, textiles, chemicals, and many others.

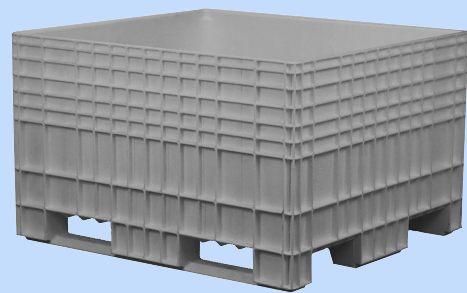
- Available in two sizes 48"x44" and 42"x29"
- Engineered of structural foam-injected high-density polyethylene
- Molded from FDA approved materials
- Solid, seamless fixed wall construction offers a watertight interior, perfect for holding pellets, powders, and liquids
- Easy-to-clean surface assures a sanitary container for repeat use
- Available in Grey or Black. Black is not FDA approved
- Designed for air freight and is ideal for rapid handling and efficient cubing of air cargo holds
- Optional lids feature a smooth, slightly domed top, which sheds water easily
- Positive base-to-top interlock allows for self-supporting stacks of Big Box containers, with or without lids
- Big Box 4844 allows four-way access (forklift to pallet jack); Big Box 4229 allows two-way access
- Drain plugs can be added after-market to facilitate washing, rinsing or emptying contents

Technical Datasheet

TSBB4229



TSBB4844



BIG BOX

TSBB4229

TSBB4844

VOLUME

External volume ft3 (m3)	19.6 (0.55)	35.6 (1.01)
Internal volume ft3 (m3)	13.2 (0.37)	25.9 (0.73)
Volumetric Efficiency	0.67	0.73

CONTAINER CAPACITY lbs (kg)

900 (408)	1200 (544)
-----------	------------

FUNCTIONAL TEMPERATURE

-20 to 120°F (-29 to 49° C)

PROJECTED FOOTING AREA ft2 (m2)

8.4 (0.78)	14.6 (1.36)
------------	-------------

TARE WEIGHT lbs (kg)

69.0 (31.3)	95.0 (43.1)
-------------	-------------

MAX STATIC VERTICAL LOAD lbs (kg)

4845 (2197.7)	6475 (2937)
---------------	-------------

MAX LOAD STACK (Dynamic)

4 high	3 high
--------	--------

MAX LOAD STACK (Static)

6 high	6 high
--------	--------

APPROXIMATE RETURN RATIO

1:1	1.5:1 (nested)
-----	----------------

TRUCKLOAD QUANTITY

Upright	Nested / Upright
---------	------------------

45 ft trailer	114	96 / 72
48 ft trailer	117	110 / 72
53 ft trailer	132	112 / 84

SEA CONTAINER QUANTITY

Upright	Nested / Upright
---------	------------------

20 ft	48	35 / 24
40 ft	99	75 / 54
40 ft high cube	99	75 / 54

Technical Datasheet

BIG BOX

OUTSIDE DIMENSIONS

	TSBB4229 IN (MM)	TSBB4844 IN (MM)
Length	41.9 (1064)	47.9 (1217)
Width	28.9 (734)	43.8 (1113)
Height	27.9 (709)	29.3 (744)

INSIDE DIMENSIONS

	IN (MM)	IN (MM)
Length	38.9 (988)	45.2 (1148)
Width	25.8 (655)	41.3 (1049)
Height	22.7 (577)	24.0 (610)

FORK OPENINGS

	42" side	48" side
Height	4.0 (102)	3.1 (78.7)
Width	10.5 (267)	11.8 (300)

LIDS BIG BOX

WEIGHT lbs (kg)

OUTSIDE DIMENSIONS

	TSBBL422904 IN (MM)	TSBBL484403 IN (MM)
Length	42.5 (1080)	48.8 (1240)
Width	29.5 (7491)	44.9 (1140)
Height	4 (102)	3 (76)

INSIDE DIMENSIONS

	IN (MM)	IN (MM)
Length	42.1 (1069)	48.4 (1229)
Width	32.5 (826)	43.8 (1113)
Height	1.5 (38)	1.5 (38)

