



Tote Solutions Ltd.

Macro Plastics Bins



MACROBIN® 32 & 34 SERIES

The **MacroBin 32 and 34 Series** are large capacity rectangular bins with 4-way entry and rotatable feet. When empty, three bins can nest in the space of two for greater return-trip shipping efficiency and storage capacity.

- **Impact-grade plastic** lasts longer, standing up to heavy day-to-day use, season after season. The molded plastic resists splintering, reducing damage to product and maintenance costs. Bin repair is inexpensive with hot air welding.
- **Rounded corners and smooth surfaces** mean fewer scuffs, abrasions, and cuts on your product. Risk of contamination is reduced because there are fewer places for unwanted particles to hide.
- **Easy-to-sanitize** MacroBins keep cleaning costs to a minimum. A high-pressure wash removes most contaminants.





- **Reduced cooling costs**
Over 600 ventilation slots in the sides and base promote air flow and help your products cool down faster.



- **Better sanitation and reduced contamination**
Smooth, nonporous surfaces are easy to sanitize and won't trap debris, breed bacteria, or absorb chemicals like wood bins.



- **Improved traceability and bin security**
Several identification methods including RFID tags and attractive foil embossing are available.

SHUTTLEBIN™ 330

The **ShuttleBin 330** is easy to set-up, use for displays, knock-down, and return. The optional drop-down doors allow for easy access on the retail floor, then the easy-to-fold side walls allow the ShuttleBin to collapse to a height of 12.1 inches. Durable and fully-vented, this compact-folding bin is the single solution for retail transport, storage, and display.

- **Unique ten-point zipper latch system** locks folding walls securely and ensures fast set-up and knock-down for increased productivity.
- **Splinter-resistant plastic** delivers reduced maintenance costs, fewer injuries to workers, and less damage to product and equipment.

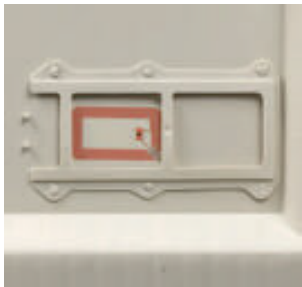




- **Faster and safer stacking**
The positive interlocking foot design allows for secure stacking up to 8 bins high.



- **Lower shipping costs**
Ideal for closed-loop distribution systems, easy-to-fold side walls allow the ShuttleBin to fold flat. Three folded bins can be stored in the space of one for reduced return freight costs.



- **Improved traceability and bin security**
Several identification methods including RFID tags and attractive foil embossing are available.

PROBIN™ 16 & 24 SERIES

The **ProBin 16 and 24 Series** is ideal for material handling and food processing applications. The smooth, nonporous surfaces are easy to clean and won't trap debris. The potential for cross contamination is reduced. Available in multiple colors, the 24-S can be used for sorting and identifying materials.

- **FDA-approved materials** are certified safe for use with food products, eliminating many HACCP problems associated with wood bins.
- **Nonporous surfaces** won't absorb water or dehydrate your product like wood bins, and they provide a constant tare weight throughout their use.
- **Lightweight construction** reduces shipping costs and makes ProBins easier to move; their interlocking foot design makes them safer to stack — up to 9 high.
- **Secure-fitting MacroLids®** provide additional coverage and further reduce the risk of contamination from foreign particles.

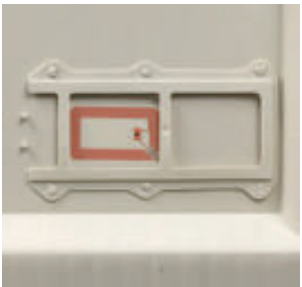




- **Multiple storage options**
The 24-S is available in blue, gray, and green, in addition to the standard ivory color to provide multiple options for sorting and identifying materials easily.



- **Better sanitation and reduced contamination**
Smooth, nonporous surfaces are easy to sanitize and won't trap debris, breed bacteria, or absorb chemicals like wood bins.



- **Improved traceability and bin security**
Several identification methods including RFID tags and attractive foil embossing are available.

