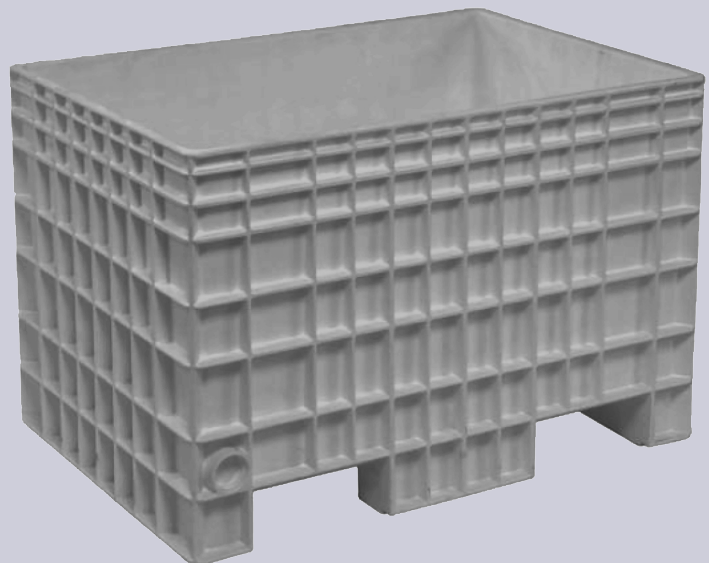
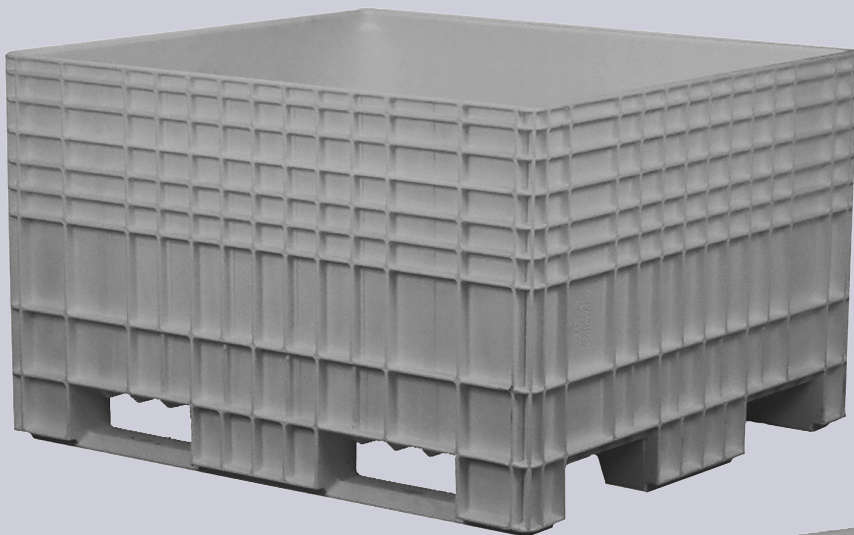




Tote Solutions Ltd.

# Big Box Containers



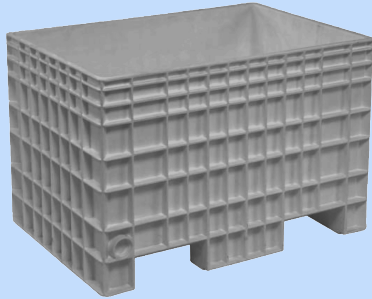
# KEY FEATURES OF BIG BOX CONTAINERS

Durable and adaptable, **Big Box Containers** are ideal for a variety of applications including food processing, agriculture, fisheries, textiles, chemicals, and many others.

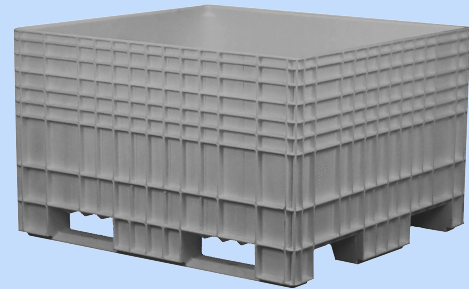
- Available in two sizes 48"x44" and 42"x29"
- Engineered of structural foam-injected high-density polyethylene
- Molded from FDA approved materials
- Solid, seamless fixed wall construction offers a watertight interior, perfect for holding pellets, powders, and liquids
- Easy-to-clean surface assures a sanitary container for repeat use
- Available in Grey or Black. Black is not FDA approved
- Designed for air freight and is ideal for rapid handling and efficient cubing of air cargo holds
- Optional lids feature a smooth, slightly domed top, which sheds water easily
- Positive base-to-top interlock allows for self-supporting stacks of Big Box containers, with or without lids
- Big Box 4844 allows four-way access (forklift to pallet jack); Big Box 4229 allows two-way access
- Drain plugs can be added after-market to facilitate washing, rinsing or emptying contents

# Technical Datasheet

TSBB4229



TSBB4844



## BIG BOX

## TSBB4229

## TSBB4844

### VOLUME

External volume ft <sup>3</sup> (m <sup>3</sup> )	19.6 (0.55)	35.6 (1.01)
Internal volume ft <sup>3</sup> (m <sup>3</sup> )	13.2 (0.37)	25.9 (0.73)
Volumetric Efficiency	0.67	0.73

<b>CONTAINER CAPACITY lbs (kg)</b>	900 (408)	1200 (544)
------------------------------------	-----------	------------

<b>FUNCTIONAL TEMPERATURE</b>	-20 to 120°F (-29 to 49° C)	
-------------------------------	-----------------------------	--

<b>PROJECTED FOOTING AREA ft<sup>2</sup> (m<sup>2</sup>)</b>	8.4 (0.78)	14.6 (1.36)
--	------------	-------------

<b>TARE WEIGHT lbs (kg)</b>	69.0 (31.3)	95.0 (43.1)
-----------------------------	-------------	-------------

<b>MAX STATIC VERTICAL LOAD lbs (kg)</b>	4845 (2197.7)	6475 (2937)
--	---------------	-------------

<b>MAX LOAD STACK (Dynamic)</b>	4 high	3 high
---------------------------------	--------	--------

<b>MAX LOAD STACK (Static)</b>	6 high	6 high
--------------------------------	--------	--------

<b>APPROXIMATE RETURN RATIO</b>	1:1	1.5:1 (nested)
---------------------------------	-----	----------------

<b>TRUCKLOAD QUANTITY</b>	Upright	Nested / Upright
---------------------------	---------	------------------

45 ft trailer	114	96 / 72
---------------	-----	---------

48 ft trailer	117	110 / 72
---------------	-----	----------

53 ft trailer	132	112 / 84
---------------	-----	----------

<b>SEA CONTAINER QUANTITY</b>	Upright	Nested / Upright
-------------------------------	---------	------------------

20 ft	48	35 / 24
-------	----	---------

40 ft	99	75 / 54
-------	----	---------

40 ft high cube	99	75 / 54
-----------------	----	---------

# Technical Datasheet

## BIG BOX

### OUTSIDE DIMENSIONS

	<b>TSBB4229</b>	<b>TSBB4844</b>
	<b>IN (MM)</b>	<b>IN (MM)</b>
Length	41.9 (1064)	47.9 (1217)
Width	28.9 (734)	43.8 (1113)
Height	27.9 (709)	29.3 (744)

### INSIDE DIMENSIONS

	<b>IN (MM)</b>	<b>IN (MM)</b>
Length	38.9 (988)	45.2 (1148)
Width	25.8 (655)	41.3 (1049)
Height	22.7 (577)	24.0 (610)

### FORK OPENINGS

	42" side	48" side
Height	4.0 (102)	3.1 (78.7)
Width	10.5 (267)	11.8 (300)

## LIDS BIG BOX

### WEIGHT lbs (kg)

	14.3 (6.5)	14.7 (6.7)
--	------------	------------

### OUTSIDE DIMENSIONS

	<b>IN (MM)</b>	<b>IN (MM)</b>
Length	42.5 (1080)	48.8 (1240)
Width	29.5 (7491)	44.9 (1140)
Height	4 (102)	3 (76)

### INSIDE DIMENSIONS

	<b>IN (MM)</b>	<b>IN (MM)</b>
Length	42.1 (1069)	48.4 (1229)
Width	32.5 (826)	43.8 (1113)
Height	1.5 (38)	1.5 (38)

